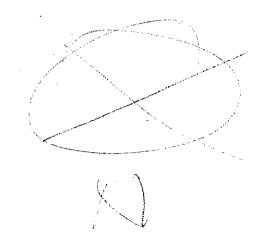


EHLINGER PLACE

SCALE: 1" = 50'

1951

D/R-V-154 P-125 Date of Filing this Reference was May 14, 1952



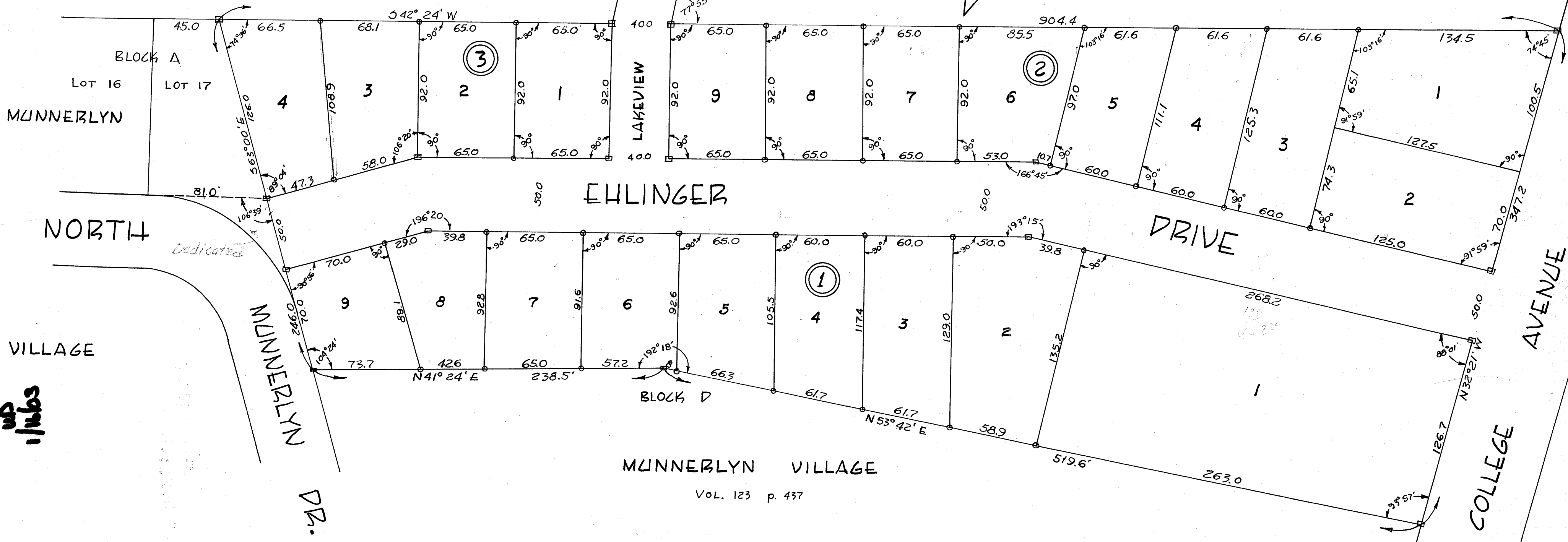
COUNTRY CLUB ESTATES

VOL. 81 p. 466

- - Concrete Monument
- - 3/8" Iron bar

BLOCK E

BLOCK C



on business up 1/1/63

MUNNERLYN VILLAGE

VOL. 123 p. 437